



12/12/2016  
Novi Sad

# Knowledge FOR Resilient soCiEty

**KICK-OFF MEETING**

*Enrico Ronchi, Ph.D.  
Lund University*



LUND UNIVERSITY

Co-funded by the  
Erasmus+ Programme  
of the European Union

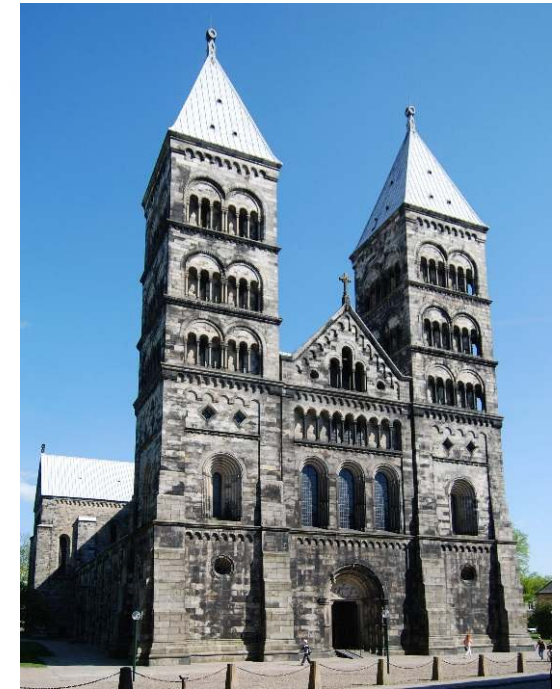


*The European Commission support for the production of this publication does not constitute an endorsement of the contents which reflects the views only of the authors, and the Commission cannot be held responsible for any use which may be made of the information contained therein.*

# Where are we?



**Lund**



- 87 000 inhabitants
- University town



LUND UNIVERSITY

Co-funded by the  
Erasmus+ Programme  
of the European Union





**LUND**  
UNIVERSITY



- *Oldest institution of higher education in Scandinavia (1666)*
- *One of the largest research universities in Scandinavia*
- *Consistently ranked among world's top 100 universities*
- *43,000 students*
- *3200 Phd students*
- *6700 employees*
- *8 faculties (including Faculty of Engineering)*
- *600 partner universities in over 70 countries*

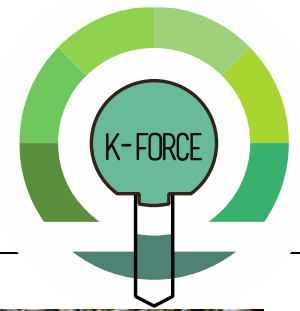


LUND UNIVERSITY

Co-funded by the  
Erasmus+ Programme  
of the European Union



# Lund University



## Divisions involved in the project



*Division of Fire Safety Engineering*

*Division of Risk Management and Societal Safety*

*Centre for Societal Resilience*

Made of researchers from both departments



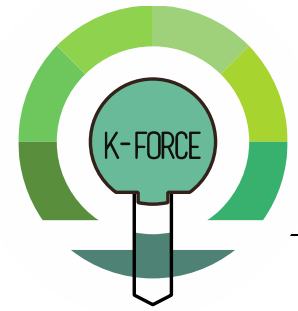
LUND UNIVERSITY

Co-funded by the  
Erasmus+ Programme  
of the European Union



# Division of Fire Safety Engineering

---



- FPE education since 1986
- Current staff
  - 1 Professor
  - 9 Lecturers
  - 6 PhD students
  - 12 Industrial PhD students
  - 2 admin staff
- Two fire laboratories
- Strategic positions in IAFSS and ISO/TC92 Fire safety





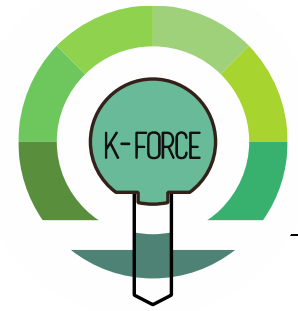
# Division of Risk Management and Societal Safety

---



- Previously merged with FSE
- Independent Division since 2014
- Current staff
  - 2 Professors
  - 8 Lecturers
  - 12 PhD students
  - 2 admin staff





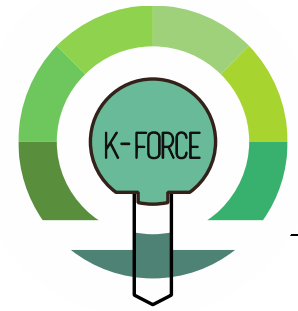
## Main research areas

- Performance-based design (H. Frantzich)
- Fire modelling (P. van Hees)
- Fire development (N. Johansson)
- Extinguishing systems (B. Husted)
- Evacuation modelling (E. Ronchi)
- Human behaviour (D. Nilsson)
- Fire and Rescue (S. Svensson)

[www.brand.lth.se/research](http://www.brand.lth.se/research)

# Division of Risk Management and Societal Safety

---



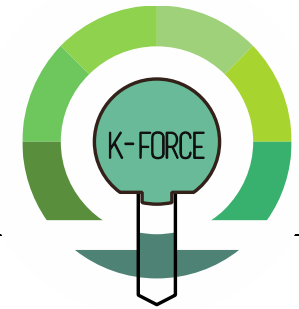
## Main research areas

- Emergency response
- Crisis management
- Risk and vulnerability analysis
- Risk governance
- Societal Resilience

[www.risk.lth.se/research/](http://www.risk.lth.se/research/)



# Research

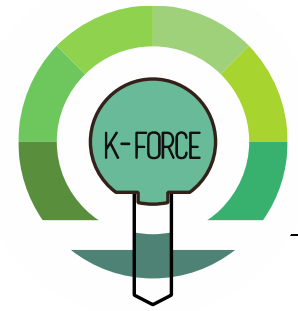


## Examples of recent and ongoing projects

Project name	Year	Sponsor
ForensicVR	2016-2018	Crafoord Foundation
e-Murray	2016-2017	US Department of Commerce
CascEff	2014-2017	EU-FP7
FireTools	2013-2016	EU-FP7 Marie Curie Actions
Adaptive command & control for Swedish Crisis Management	2015-2017	Swedish Civil Contingency Agency
Evacuation Route Design	2013-2015	Swedish Transport Administration
Ascending stair evacuation	2013-2015	Swedish Transport Administration / Swedish Fire research council
KESÖ	2010-2013	EU-Interreg

# Education

---



- Swedish B.Sc. in Fire Protection Engineering
- Swedish M.Sc. in Risk Management and Safety Engineering
- International Erasmus Mundus M.Sc. In Fire Safety Engineering
- International Master Programme in Disaster Risk Management and Climate Change Adaptation
- International M.Sc. in Human Factors and System Safety



Main role in the K-Force project is as leader of Work Package 2

*Definition of the directions of Phd studies and the implementation of a new programme*





## Main contacts at Lund University for K-Force

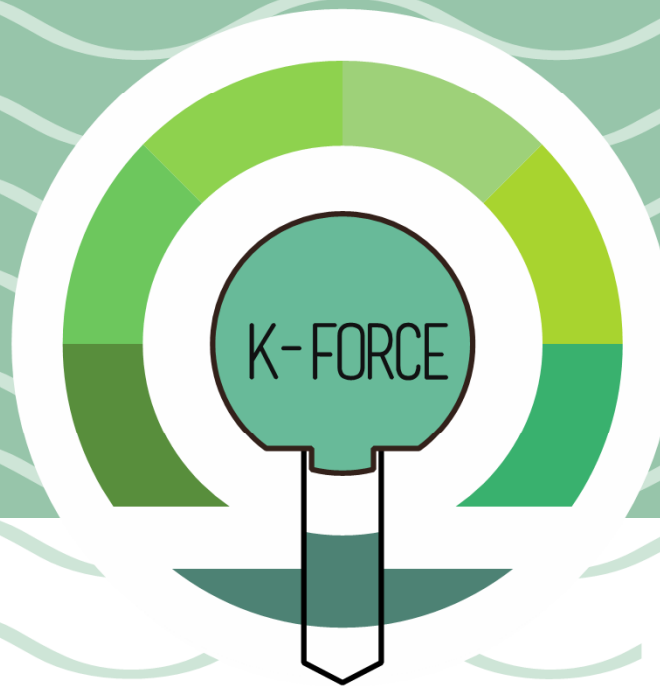
*Enrico Ronchi, Ass. Senior Lecturer (FSE)*

[Enrico.ronchi@brand.lth.se](mailto:Enrico.ronchi@brand.lth.se)

*Mo Hamza, Professor (Risk)*

[Mo.Hamza@risk.lth.se](mailto:Mo.Hamza@risk.lth.se)





Co-funded by the  
Erasmus+ Programme  
of the European Union



Thank you  
for your attention

[enrico.ronchi@brand.lth.se](mailto:enrico.ronchi@brand.lth.se)



LUND UNIVERSITY

**Knowledge FOR Resilient soCiEty**