



11-13 Dec 2016
Novi Sad

Knowledge FOR Resilient soCiEty

KICK-OFF MEETING

*Enrico Ronchi, Ph.D.
Lund University*



LUND UNIVERSITY

Co-funded by the
Erasmus+ Programme
of the European Union



The European Commission support for the production of this publication does not constitute an endorsement of the contents which reflects the views only of the authors, and the Commission cannot be held responsible for any use which may be made of the information contained therein.

Objective of WP2



Define the directions for the development of a DRM&FSE Ph.D. programme

LU will lead this WP

*Contribution from UNIZA and UNS
(Leader team members)*



LUND UNIVERSITY

Co-funded by the
Erasmus+ Programme
of the European Union



WP2



WP2 Tasks

- 1) Assessment of **WB needs** in relation to EU trends in the field
- 2) Analysis of **teaching staff** and obtainment of a **competent team** for a DRM&FSE PhD program in the WBC
- 3) Review and comparison with **existing Ph.D. models** and curricula in EU





WP2 Tasks

4) Development of **Ph.D. Curriculum**

- Definition of **learning outcomes**
- Definition of **methodological approaches**

5) Compilation of a list of **Ph.D. themes** according to disaster trends in WB





INPUT

- *Creation of a draft version of a PhD Curriculum*
- *Support on course selection*
- *Basis for implementation*

OUTPUT

- *Doctoral Programme in Disaster Risk Management and Fire Safety Engineering*





Why LU as a lead of WP2?

*LU includes researchers from all key disciplines
(e.g., fire safety, risk, resilience, safety and sustainability, etc.)*

Two established PhD programmes (first in 1988!) in these areas:

- 1) PhD program in Fire Safety Engineering**
- 2) PhD Program in Systems Safety**

<http://www.brand.lth.se/staff/graduated-doctoral-students/>



PhD at LU



PhD program in Fire Safety Engineering

“Fire Safety research focuses on the physical and chemical processes involved in the start, growth, spread and extinguishing of fires, interaction between fires and buildings/facilities, systems for preventing or discovering fires or limiting the impact of fires, and evacuation and human behaviour in conjunction with fires...”

reg. no U 2015/80



LUND UNIVERSITY

Co-funded by the
Erasmus+ Programme
of the European Union





PhD program in Systems Safety

“Safety and risk are closely related and encompass the constant work in a sociotechnical system to prevent risks developing into accidents and crises. A key aspect of the subject is analysis and understanding of how and why accidents and crises come about and the actions taken as a result by social agents...”

reg. no U 2015/80





Overall objective of third-cycle studies at LU

- Contribute to **social development** and prosperity
- Meeting the needs of business and **industry**
- Meeting needs of **academia** and **wider society**





How does a PhD work at LU?

- Two parts, namely **courses and thesis** (at least 120 ECTS) for a total of 240 ECTS (corresponding to 4 years)
- Option for **licentiate degree** ("halfway" a PhD) where you need at least 30 ECTS for courses and a passed thesis of at least 60 ECTS (total at least 120 ECTS)
- PhD students in Sweden are **employed as staff** (including benefits, union, etc.)
- No more than **20%** for a full-time position can be **administrative and teaching duties** for a PhD student (common scheme is 5 year employment at 80%+20%).





Doctoral education is arranged at department level

We have set of **general** (LU-based) and **internal** (department-based) requirements for PhD students educational outcomes





Common recommended courses

- General courses to provide students with broad knowledge of research methods
- First broad overview of the whole specialization
- Not necessarily specifically focused on the field of the thesis project





Elective courses



FSE

- basic combustion and fluid physics
- models of fire growth and fire spread
- models of fire extinguishing
- models for evacuation in the event of fire
- human behaviour
- methods of risk analysis and decision-making
- Other



SS

- complex systems
- design theory
- decision analysis and decision theory
- resilience
- models for risk analysis and managing uncertainties
- theories of risk management including the impact of human and organizational factors
- risk governance
- Other





The role of the study plan

Individual tool for supervisors and students to “keep track” of students’ progresses (courses, credits, publications, conference attendance, etc.)

Periodically jointly revised/reviewed



Next step..



- Initiate discussion on PhD **curriculum development**
- Assess WB needs and EU trends in DRM&FSE PhD

Ready to work on WP2!



LUND UNIVERSITY

Co-funded by the
Erasmus+ Programme
of the European Union





Main contacts at Lund University for K-Force

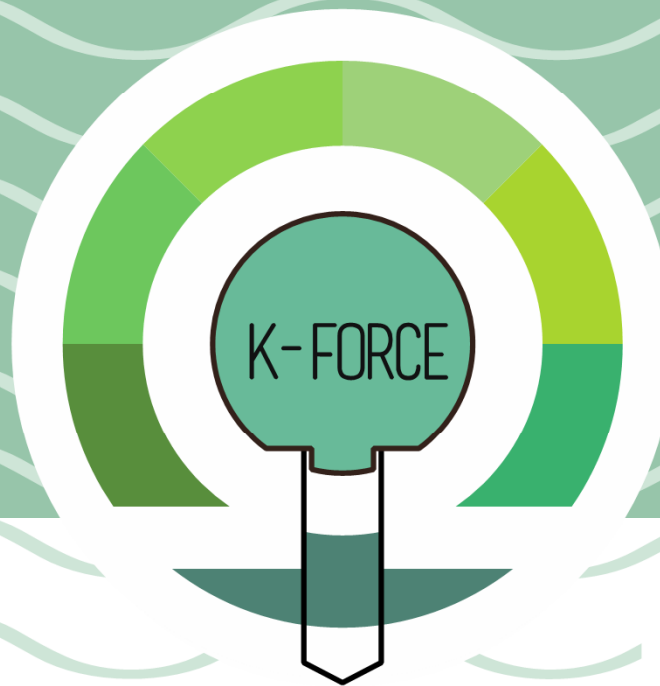
Enrico Ronchi, Ass. Senior Lecturer (FSE)

Enrico.ronchi@brand.lth.se

Mo Hamza, Professor (Risk)

Mo.Hamza@risk.lth.se





Co-funded by the
Erasmus+ Programme
of the European Union



Thank you
for your attention

enrico.ronchi@brand.lth.se



LUND UNIVERSITY

Knowledge FOR Resilient soCiEty